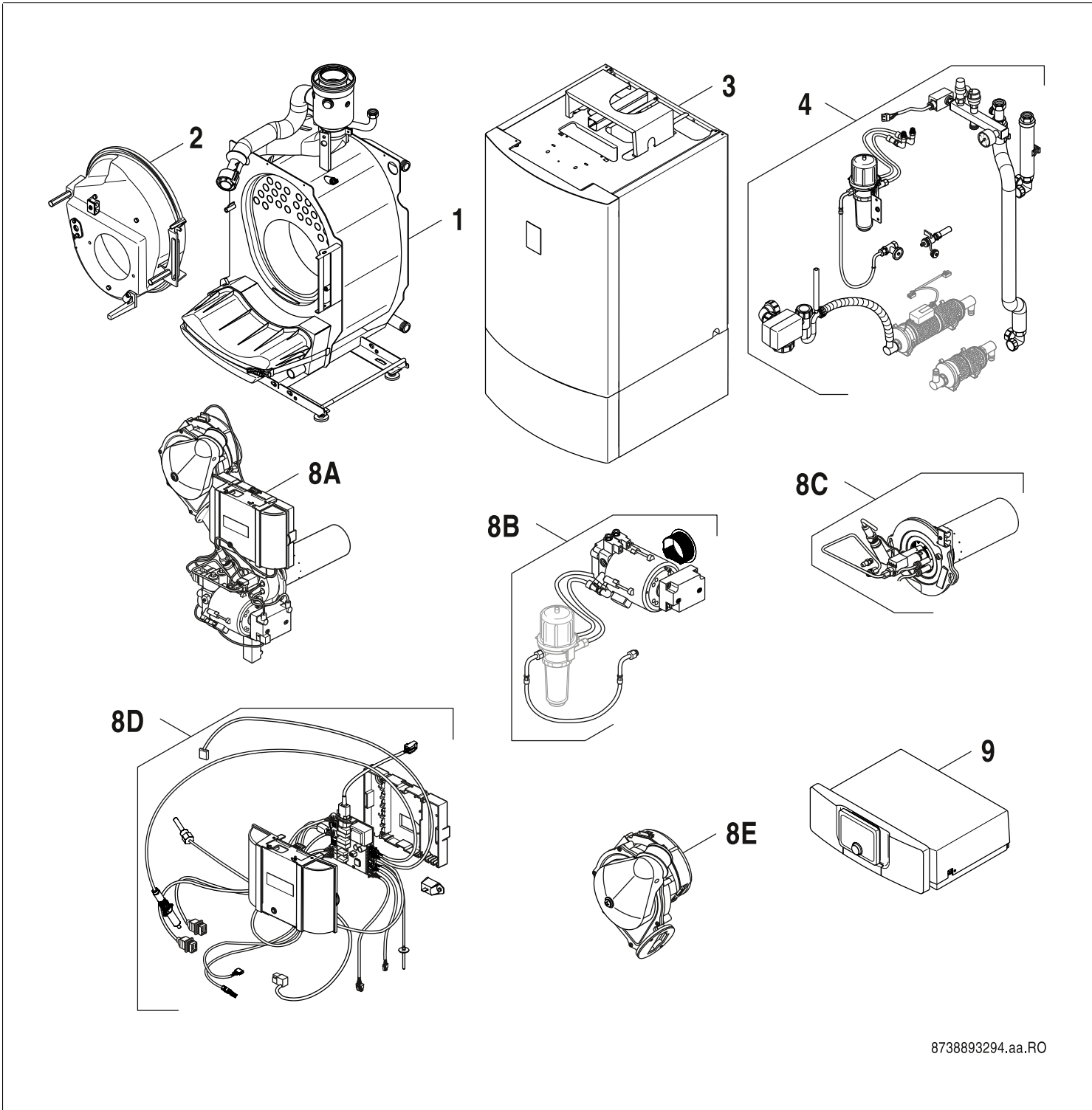


Suprapur-O KUB 19-4, 27-4



8738893294.aa.RO

[de] Wichtige Hinweise zur Installation/Montage

Die Installation/Montage muss durch eine für die Arbeiten zugelassene Fachkraft unter Beachtung der geltenden Vorschriften erfolgen.

[en] Important notes on installation/assembly

The installation/assembly must be carried out by a qualified contractor, following these instructions and in compliance with the applicable regulations.

[fr] Instructions importantes pour l'installation/le montage

L'installation/le montage doit être effectué(e) par un spécialiste qualifié pour les opérations concernées et dans le respect de la présente notice et des prescriptions applicables.

[bg] Важни указания във връзка с инсталацията/монтажа

Инсталацията/монтажът трябва да се извършва от лицензиран за работите специалист в съответствие с настоящото ръководство и с приложимите разпоредби.

[cs] Důležité pokyny k instalaci/montáži

Instalaci/montáž musí při dodržení pokynů uvedených v tomto návodu a platných předpisů provést odborný pracovník s příslušným oprávněním pro tyto práce.

[da] Vigtige anvisninger til installationen/monteringen

Installationen/monteringen skal foretages af en godkendt installatør under overholdelse af denne vejledning og de gældende forskrifter.

[el] Σημαντικές υποδείξεις για την εγκατάσταση/συναρμολόγηση

Η εγκατάσταση/τοποθέτηση πρέπει να ανατίθεται σε εκπαιδευμένο για τις συγκεκριμένες εργασίες τεχνικό προσωπικό με τήρηση αυτών των οδηγιών καθώς και των σχετικών προδιαγραφών.

[es] Indicaciones importantes para instalación/montaje

La instalación/el montaje debe realizarla personal especializado que esté autorizado para realizar estos trabajos y que tenga en cuenta estas instrucciones y la normativa vigente.

[et] Olulised juhised paigaldamiseks/montaažiks

Paigaldamist/montaaži tohib läbi viia vaid selleks volitusi omav spetsialist, arvestades kehtivaid nõudeid.

[nl-BE] Belangrijke aanwijzingen betreffende de installatie/montage

De installatie/montage moet worden uitgevoerd door een voor de werkzaamheden geautoriseerde installateur rekening houdend met deze handleiding en de geldende voorschriften.

[fi] Tärkeitä asennus- ja kokoonpano-ohjeita

Näihin töihin hyväksytyn ammattiasentajan pitää suorittaa asennus- ja kokoonpanotyöt voimassa olevien määräysten mukaisesti.

[hu] Fontos tudnivalók az installáláshoz/szereléshez

A telepítést/szerelést egy, a munkálatokra felhatalmazott szakembernek kell végeznie, jelen utasítás és az érvényes előírások figyelembevételével.

[it] Avvertenze importanti per l'installazione/il montaggio

L'installazione/il montaggio deve aver luogo ad opera di una ditta specializzata ed autorizzata in osservanza di queste istruzioni e delle direttive vigenti.

[ka] მნიშვნელოვანი მითითებები ინსტალაციისთვის/მონტაჟისთვის

ინსტალაცია/მონტაჟი უნდა განხორციელდეს სამუშაოებისთვის დაშვებული კვალიფიციური პერსონალის მიერ, მოქმედი განაწესის დაცვით.

[lt] Svarbios instaliavimo ir (arba) montavimo nuorodos

Instaliavimo / montavimo darbus, laikydamiės šios instrukcijos reikalavimų ir galiojančių taisyklių, privalo atlikti šioms darbams įgalioti specialistai.

[lv] Svarīgi norādījumi par iekārtas uzstādīšanu / montāžu

Uzstādīšanu/montāžu jāveic atbilstošajiem darbiem sertificētam speciālistam, ievērojot šo instrukciju un spēkā esošos noteikumus.

[nl] Belangrijke aanwijzingen betreffende de installatie/montage

De installatie/montage moet door een erkend installateur volgens de geldende voorschriften worden uitgevoerd.

[no] Viktig informasjon om installasjon/montering

Installasjonen/monteringen skal gjennomføres av autoriserte installatører, og installasjonsanvisningen samt gjeldende forskrifter skal følges.

[pl] Ważne wskazówki dotyczące instalacji/montażu

Instalację/montaż powinien wykonać specjalista uprawniony do tego typu prac z uwzględnieniem informacji podanych w niniejszej instrukcji oraz aktualnie obowiązujących przepisów.

[pt] Indicações importantes relativas à instalação/montagem

A instalação/montagem deve ser efectuada por um técnico autorizado para os trabalhos, respeitando este manual e as prescrições válidas.

[ro] Indicații importante privind instalarea/montajul

Instalarea/montajul trebuie realizate de către un specialist autorizat pentru lucrările respective, respectându-se prezentele instrucțiuni și prescripțiile valabile.

[ru] Важные указания по подключению/монтажу

Подключение/монтаж должны выполнять только специалисты, имеющие допуск к выполнению таких работ, при соблюдении требований этой инструкции и действующих норм и правил.

[sk] Dôležité pokyny týkajúce sa inštalácie/montáže

Inštaláciu/montáž musí vykonať odborný personál, ktorý má oprávnenie pre výkon týchto prác, pričom musí dodržiavať pokyny uvedené v tomto návode a platné predpisy.

[sl] Pomembni napotki za namestitvev/montažo

Inštalacija/montažo lahko izvede samo pooblaščen strokovnjak ob upoštevanju teh navodil in veljavnih predpisov.

[sr] Važna uputstva za ugradnju i montažu

Ovu instalaciju/montažu moraju da obave stručna lica koja su ovlašćena za obavljanje takvih radova u skladu sa ovim uputstvom i važećim propisima.

[sv] Viktiga anvisningar för installation/montering

Installationen/monteringen måste utföras av en behörig och tekniskt utbildad person enligt denna anvisning samt gällande föreskrifter.

[tr] Kurulum/Montaj ile ilgili önemli uyarılar

Kurulum/montaj, bu çalışmalarını yapmasına müsaade edilen uzman kişiler tarafından işbu kılavuz ve geçerli yönetmelikler dikkate alınarak yapılmalıdır.

[uk] Важливі вказівки щодо установки/монтажу

Встановлення/монтаж повинні виконувати фахівці, що допущені до виконання таких робіт, із дотриманням цієї інструкції та діючих приписів.

[zh] 安装方面的重要提示

安装和组装工作必须由经过许可的专业人员进行，同时必须遵守本说明书和现行法规的相关要求

[ar] ملاحظات هامة للتركيب/التجميع

يجب أن يتم التركيب/التجميع من قبل متخصص مصرح له بالعمل، مع مراعاة اللوائح السارية.

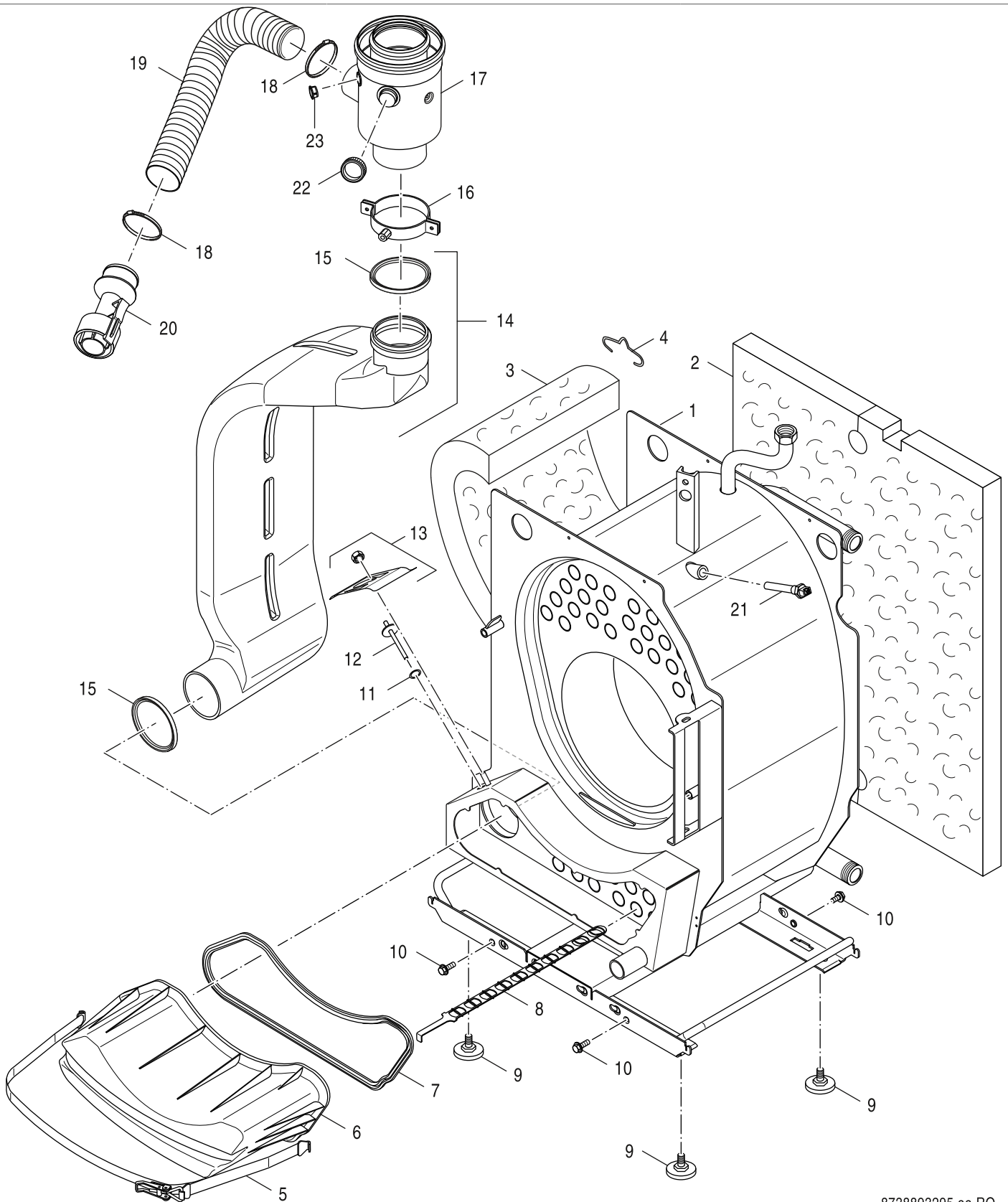
[fa] تذکرات مهم درباره نصب/مونتاژ

نصب/مونتاژ باید توسط فردی حرفه ای که مجاز به انجام این کار است، و همچنین با توجه کامل به مقررات مربوطه انجام شود.

Ersatzteilliste
Spare parts list

Liste des pièces de rechange
Lista parti di ricambio

Onderdelenlijst
Lista de repuestos



8738893295.aa.RO

1

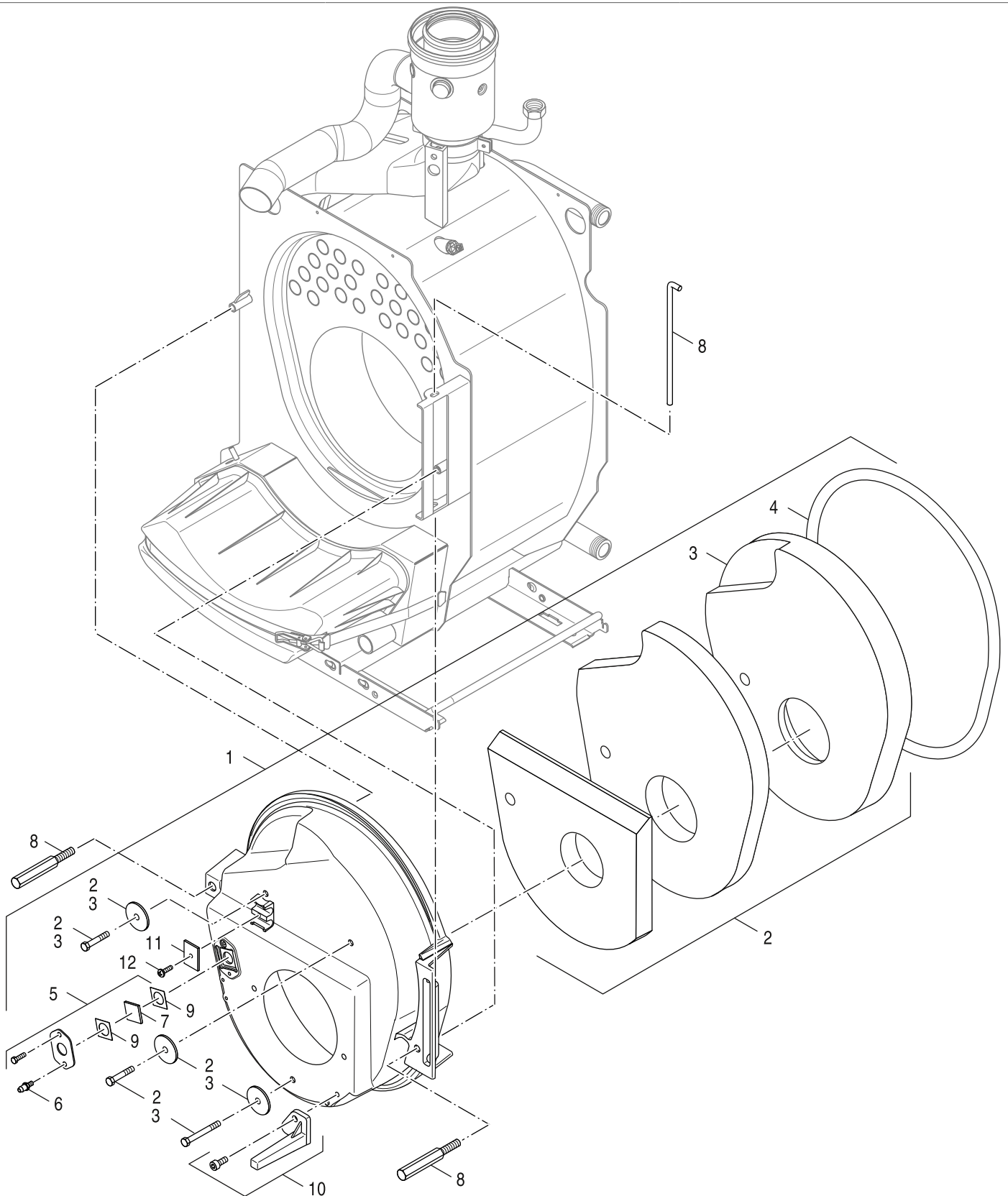
Kesselblock KUB 19-4, 27-4
Boiler block KUB 19-4, 27-4
Corps de chauffe KUB 19-4, 27-4
Corpo caldaia KUB 19-4, 27-4
Ketelblok KUB 19-4, 27-4
Cuerpo de caldera KUB 19-4, 27-4

Suprapur-O KUB 19-4, 27-4

Ersatzteilliste
Spare parts list

Liste des pièces de rechange
Lista parti di ricambio

Onderdelenlijst
Lista de repuestos



8738893296.aa.RO

2

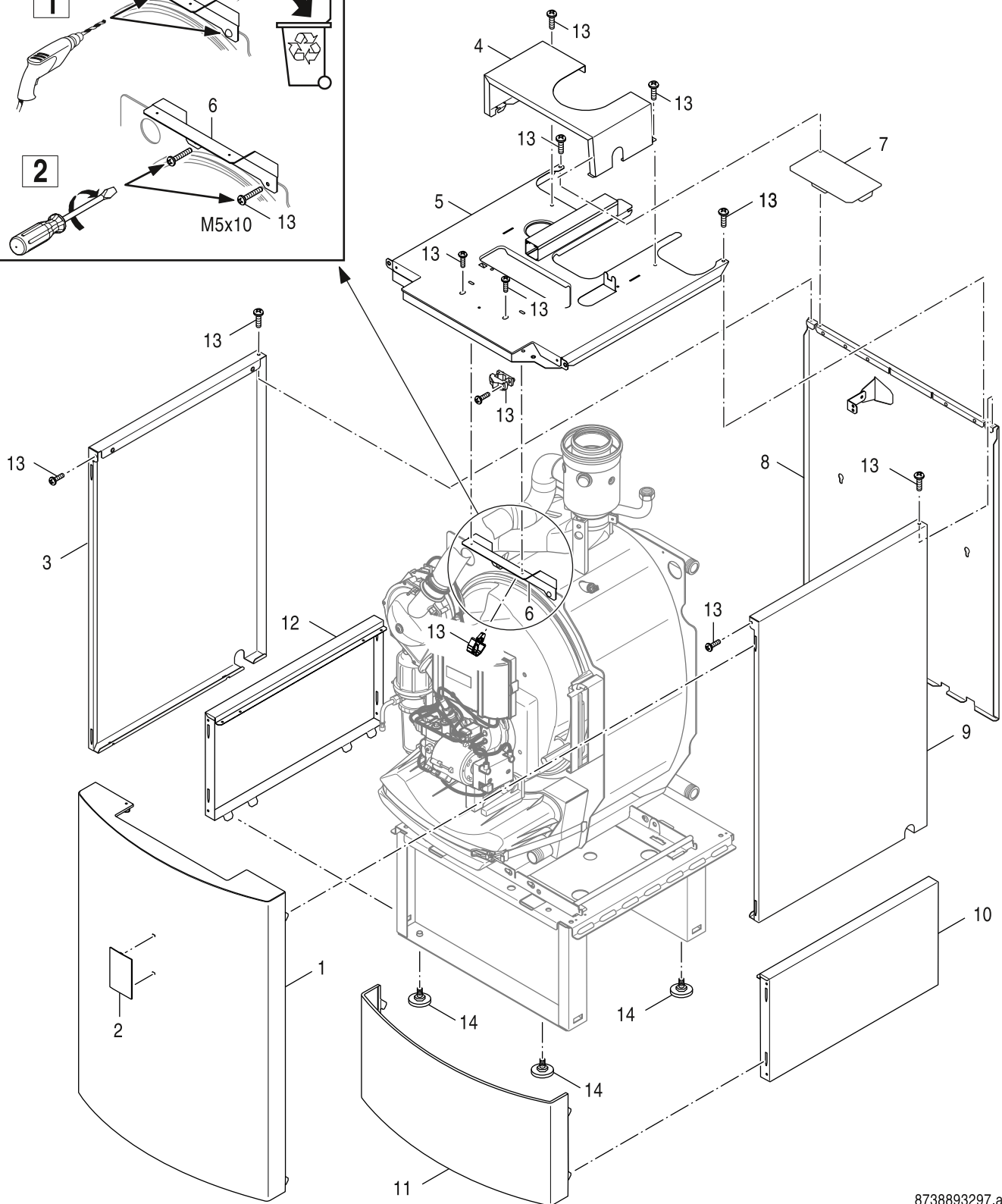
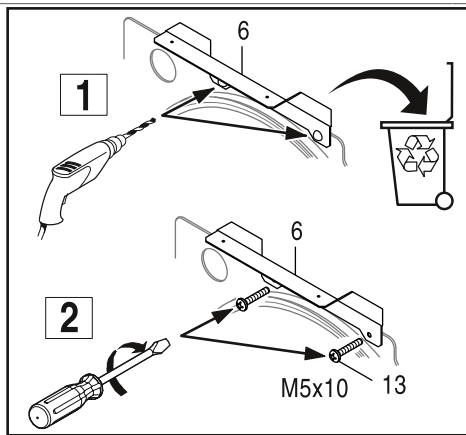
Brennertür KUB 19-4, 27-4
Burner door KUB 19-4, 27-4
Porte de brûleur KUB 19-4, 27-4
Porta del bruciatore KUB 19-4, 27-4
Branderdeur KUB 19-4, 27-4
Puerta del quemador KUB 19-4, 27-4

Suprapur-O KUB 19-4, 27-4

Ersatzteilliste
Spare parts list

Liste des pièces de rechange
Lista parti di ricambio

Onderdelenlijst
Lista de repuestos



8738893297.ab.RO

3

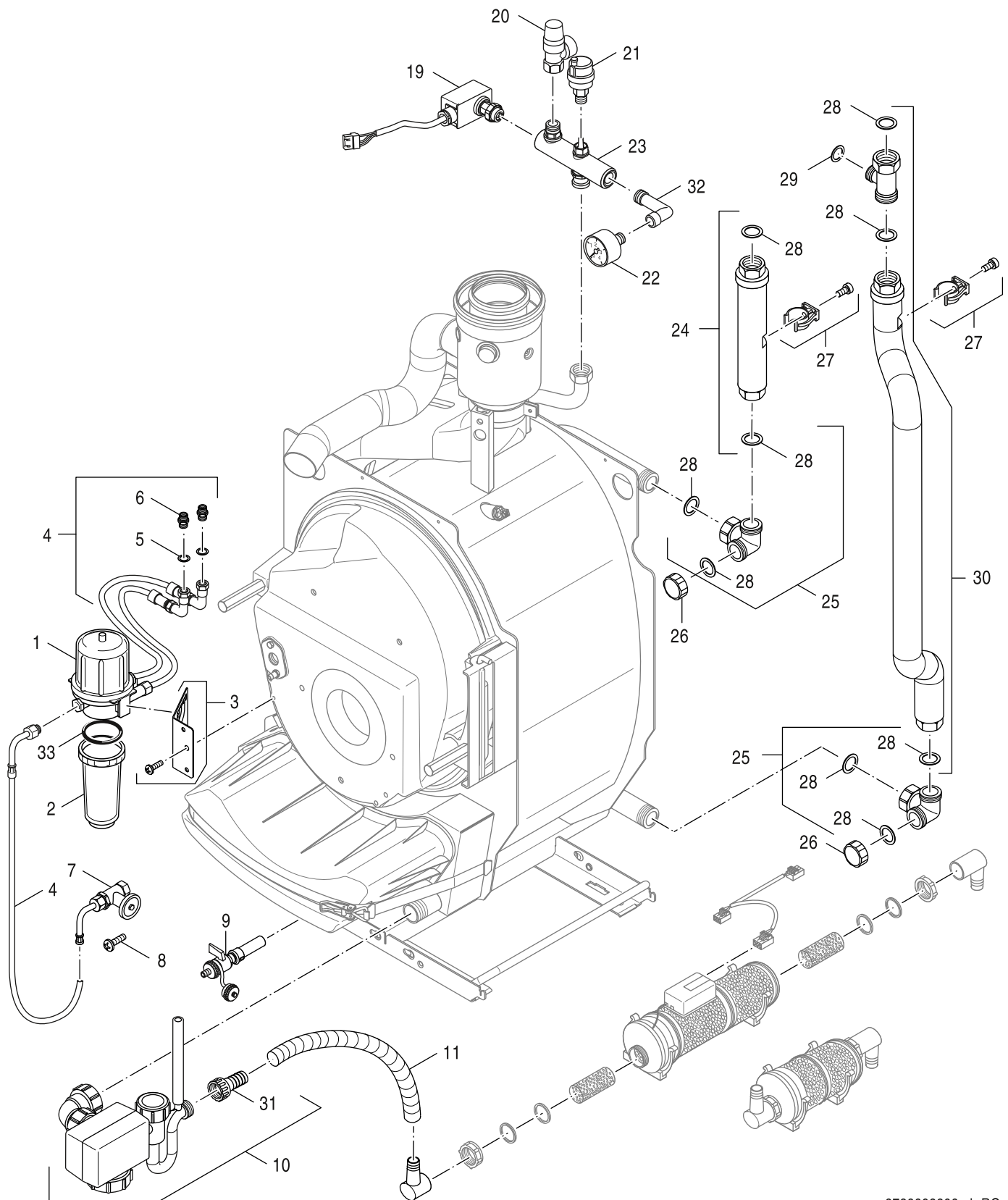
Verkleidung KUB 19-4, 27-4
Casing KUB 19-4, 27-4
Carénage KUB 19-4, 27-4
Rivestimento KUB 19-4, 27-4
Bekleding KUB 19-4, 27-4
Revestimiento KUB 19-4, 27-4

Suprapur-O KUB 19-4, 27-4

Ersatzteilliste
Spare parts list

Liste des pièces de rechange
Lista parti di ricambio

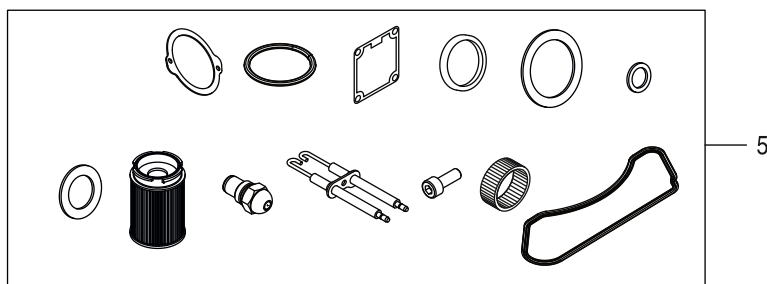
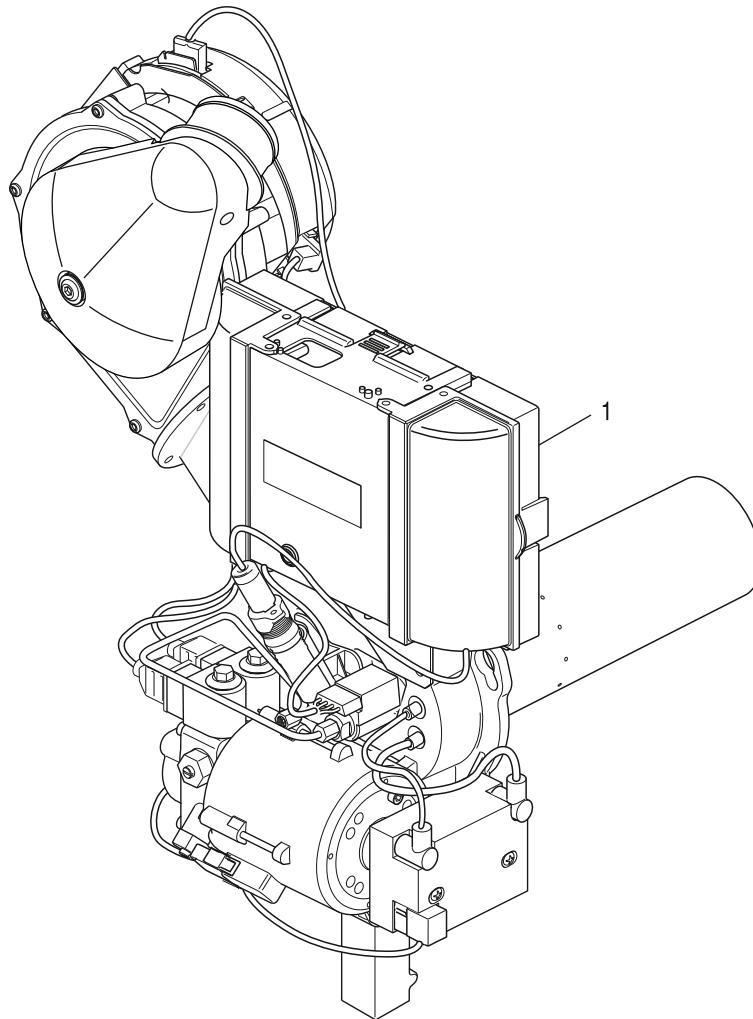
Onderdelenlijst
Lista de repuestos



8738893298.ab.RO

4
 Armatur KUB 19-4, 27-4
 Valve KUB 19-4, 27-4
 Robinet KUB 19-4, 27-4
 Valvola KUB 19-4, 27-4
 Armatuur KUB 19-4, 27-4
 Valvulería KUB 19-4, 27-4

Suprapur-O KUB 19-4, 27-4



6720905123.ab.RS-Brennervarianten

8A

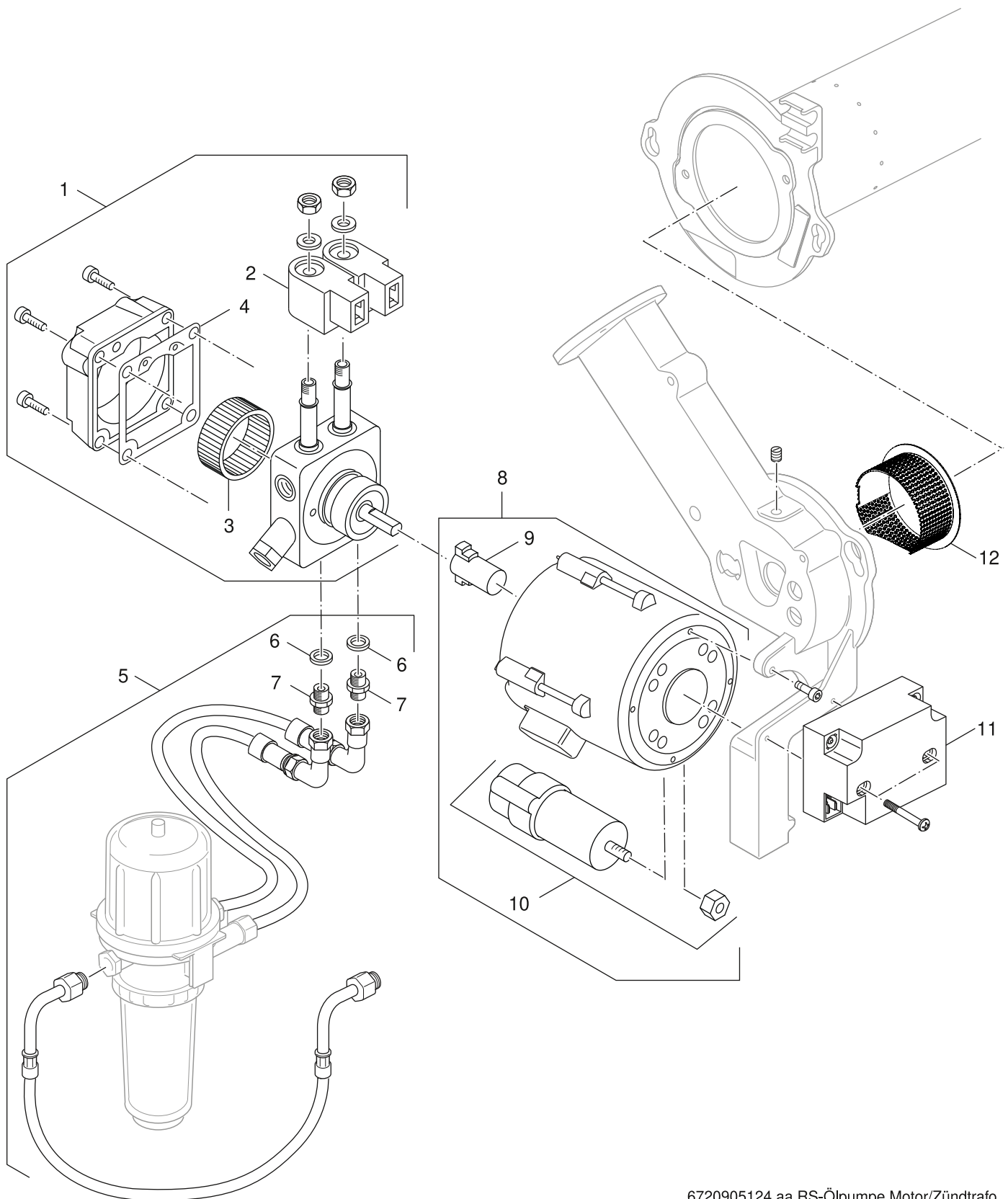
Brennervarianten
Burner versions
Variantes de brûleur
Varianti bruciatore
Brandervarianten
Variantes de quemadores

Suprapur-O KUB 19-4, 27-4

Ersatzteilliste
Spare parts list

Liste des pièces de rechange
Lista parti di ricambio

Onderdelenlijst
Lista de repuestos



6720905124.aa.RS-Ölpumpe Motor/Zündtrafo

8B

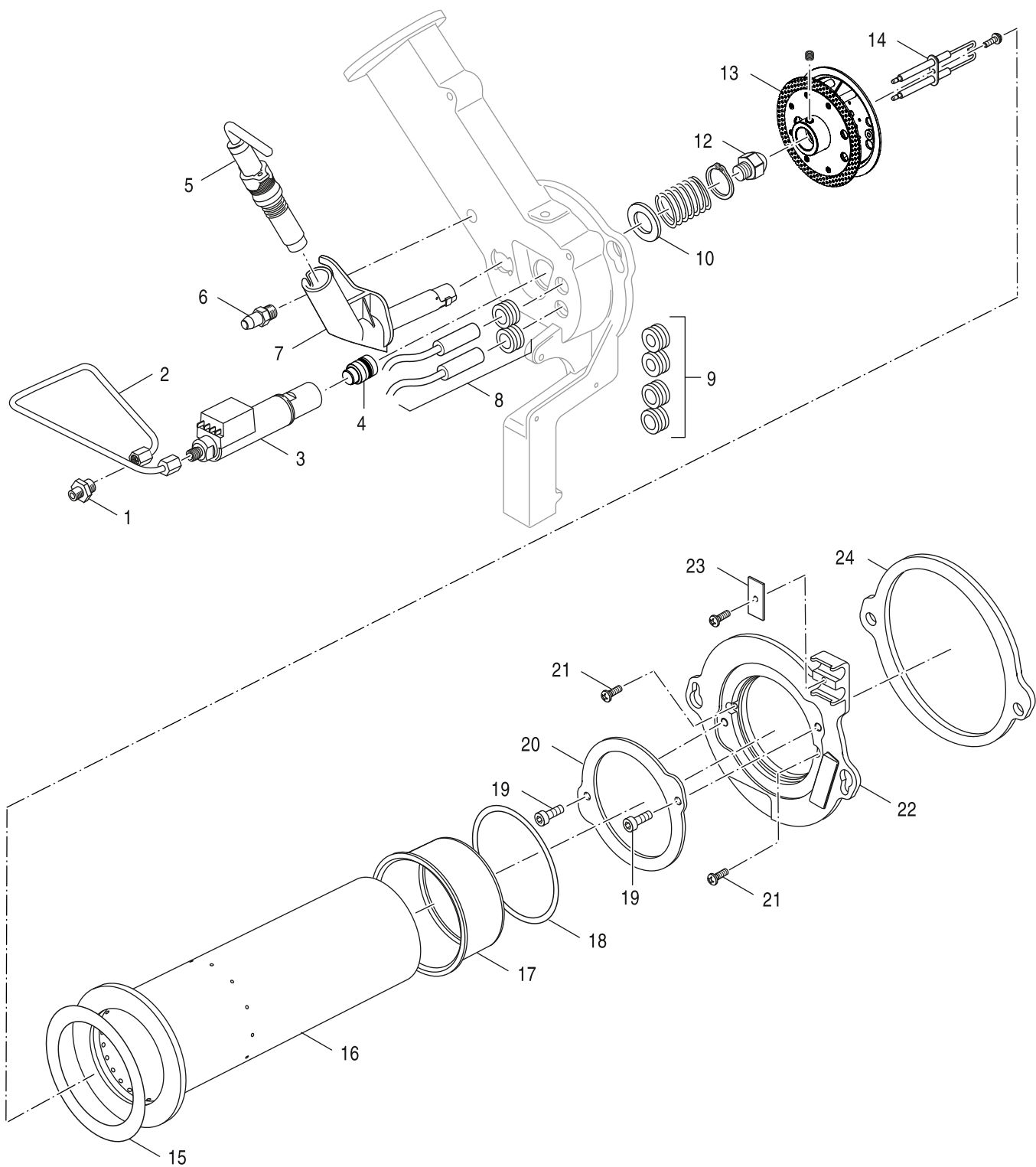
Ölpumpe
Oil pump
Pompe à fioul
Pompa olio
Oliepomp
Bomba de aceite

Suprapur-O KUB 19-4, 27-4

Ersatzteilliste
Spare parts list

Liste des pièces de rechange
Lista parti di ricambio

Onderdelenlijst
Lista de repuestos



6720905125.ab.RS-Mischsystem Ivorw rmer/Brennerrohr

8C

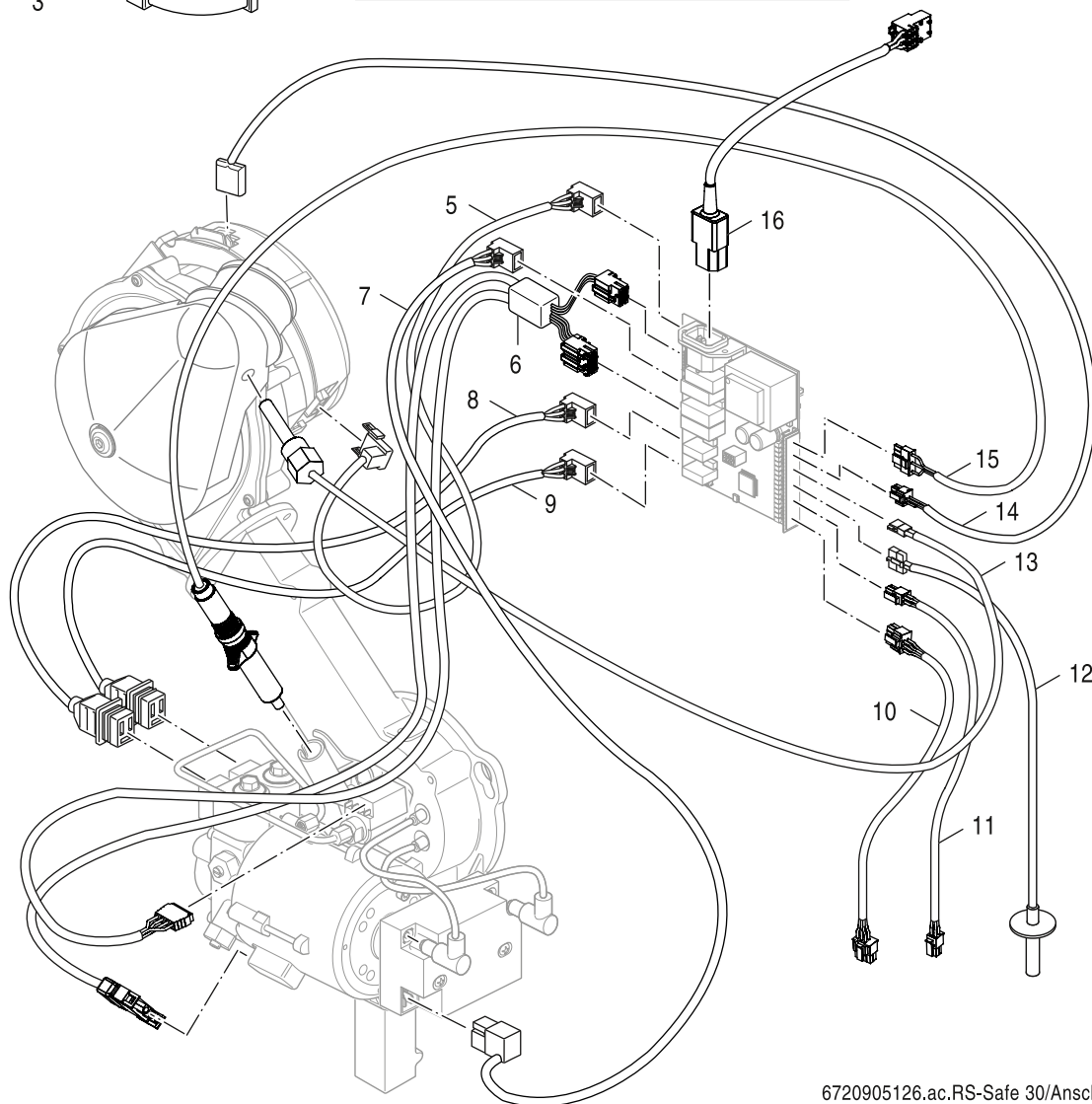
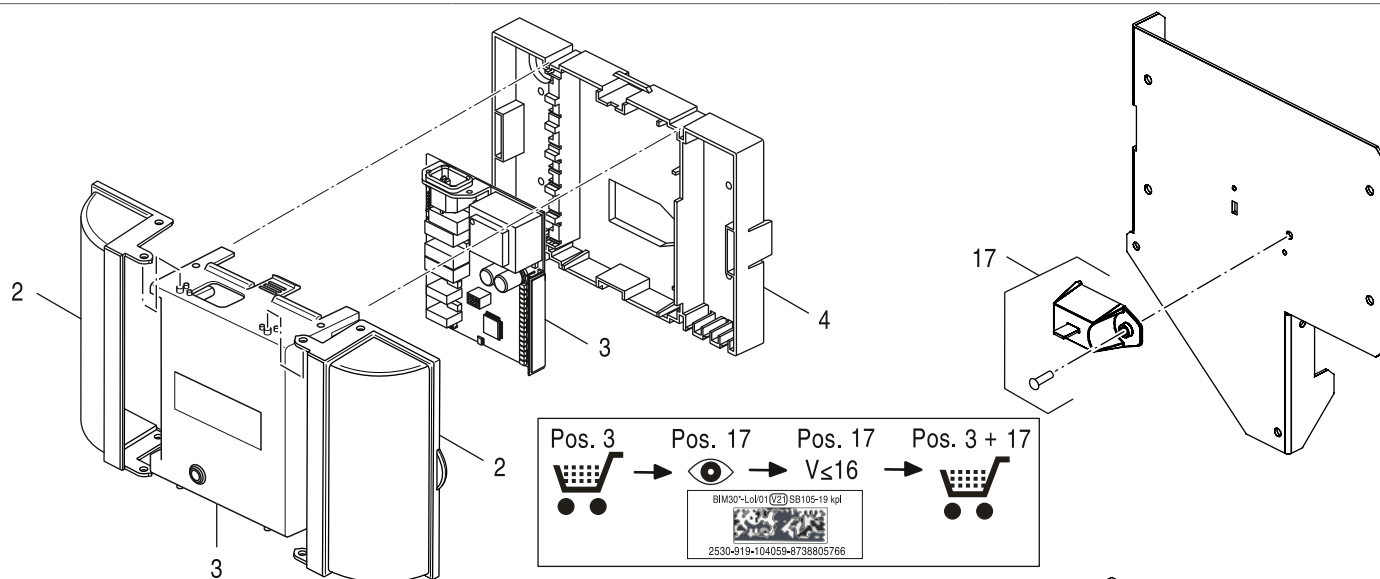
Brennerrohr
Burner tube
Tube de combustion
Raccordo bruciatore
Brander pijp
Tubo mezclador

Suprapur-O KUB 19-4, 27-4

Ersatzteilliste
Spare parts list

Liste des pièces de rechange
Lista parti di ricambio

Onderdelenlijst
Lista de repuestos

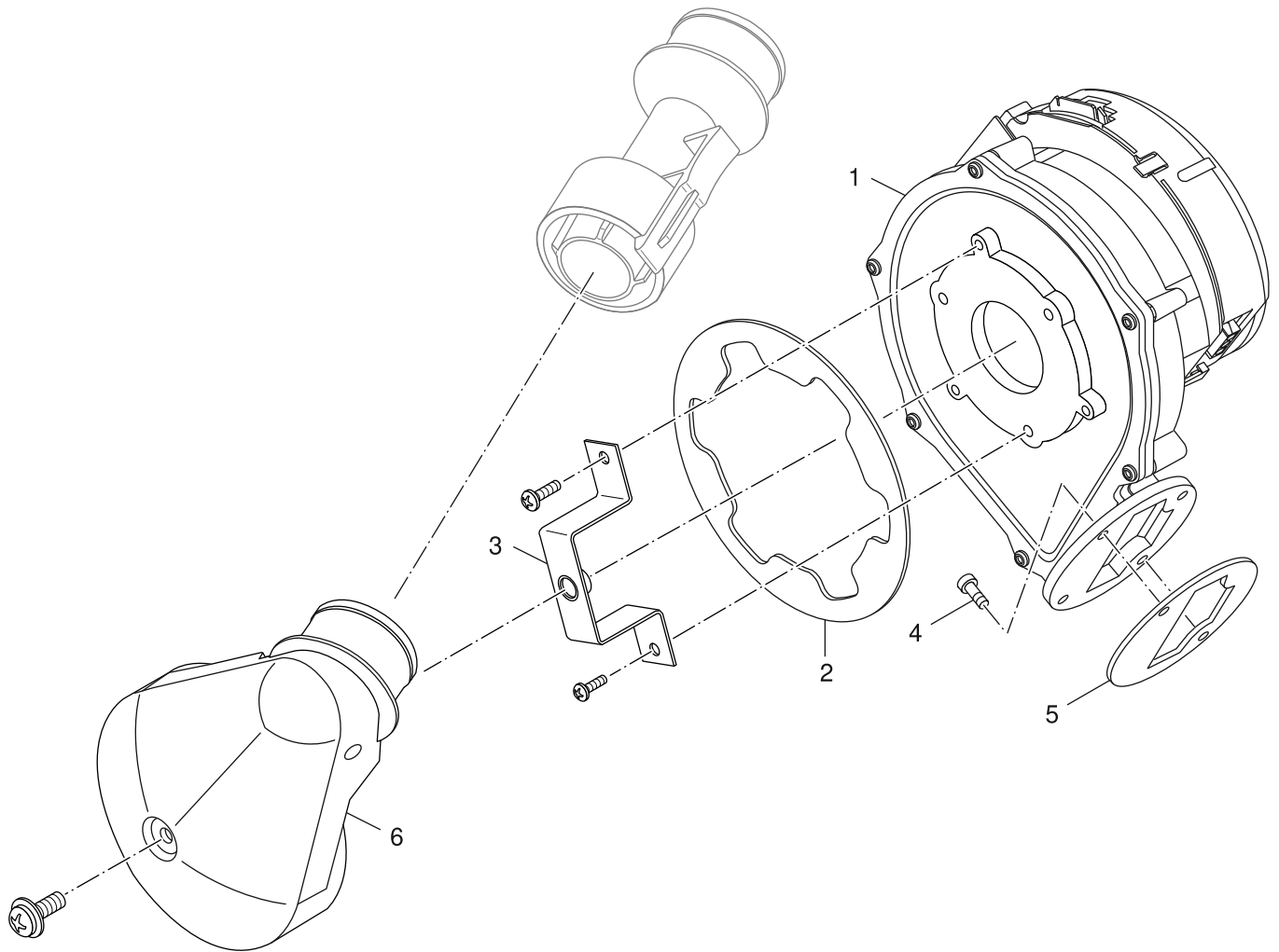


6720905126.ac.RS-Safe 30/Anschlussleitung

8D

SAFe
SAFe
SAFe
SAFe
SAFe

Suprapur-O KUB 19-4, 27-4



6720905127.aa.RS-Gebläse

Suprapur-O KUB 19-4, 27-4

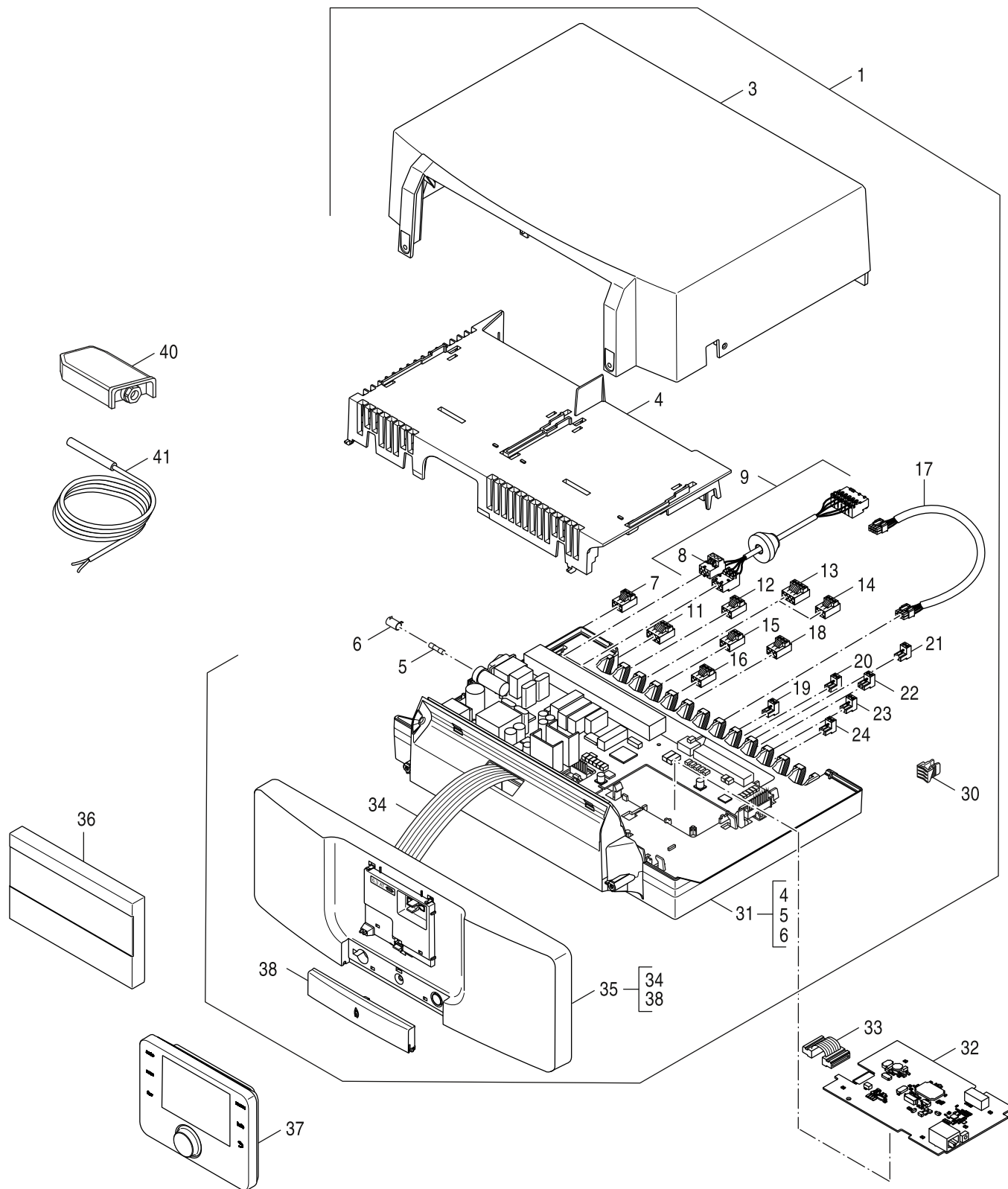
8E

Gebläse
Centrifugal blower
Ventilateur
Ventilatore
Ventilador
Ventilador

Ersatzteilliste
Spare parts list

Liste des pièces de rechange
Lista parti di ricambio

Onderdelenlijst
Lista de repuestos



8738892988.ab.RO

Suprapur-O KUB 19-4, 27-4

9

- MX25
- MX25
- MX25
- MX25
- MX25

| Übersetzungsliste List of translations | | Liste des traductions Traduzione delle descrizioni | | Vertalinglijst Lista de traducciones | |
|---|---|---|--|---|--|
| Pos | Description | Denomination | Descrizione | Benaming | Descripción |
| 1 | Element of construction | Groupe de construction | Gruppo di costruzione | Montagegroep | Grupo de construcción |
| 1 | Boiler Body 19kW V3 | Corps de chauffe 19kW V3 | Corpo caldaia 19kW V3 | Ketelblok 19kW V3 | Cuerpo de caldera 19kW V3 |
| 1 | Boiler Body 27kW V3 | Corpsde chauffe 27kW V3 | Corpo caldaia 27kW V3 | Ketelblok 27kW V3 | Cuerpo de caldera 27kW V3 |
| 2 | HEAT INSULATION RR PANEL | Isolation Dossieret | Isolamento Parete posteriore | Isolatie Achterwand | Aislamiento pared trasera |
| 3 | insulation boiler block 19/27KW | Isolation Corps de chauffe 19/27KW | Isolamento Corpo caldaia 19/27KW | Isolatie ketelblok 19/27KW | Aislamiento cuerpo de caldera 19/27KW |
| 4 | Insulation Clamp (10x) | Ressorts de retenue d 0.8 (10x) | Molla di tenuta (10x) | Borgveer (10x) | Muelle tensor para aislamientos (10x) |
| 5 | Fixing strap silencer V3 | Bande de serrage Silencieux V3 | Nastro tensore Silenziatore V3 | Fixeerband Geruisdemper V3 | Cinta de tensión silenciador de chimenea |
| 6 | Silencer compl | Silencieux | Silenziatore | Geruisdemper | Silenciador de chimenea |
| 7 | Sealing silencer (1x) | Joint Silencieux (1x) | Guarnizione Silenziatore (1x) | Pakking Geruisdemper (1x) | Junta silenciador de chimenea (1x) |
| 8 | Turbolator SB105 V2 | Turbulateur SB105 V2 | Turbolatore SB105 V2 | Turbulator SB105 V2 | Turbulador SB105 V2 |
| 9 | Foot M10x51 (4x) | Pieds réglables M10x51 (4x) | Piedini regolabili M10x51 (4x) | Voetjes Boiler HP-270-1 | Patas regulables M10x51 (4x) |
| 10 | Inst-mat boiler base frame oil BW -27kW | Matériel de montage Socle de la chaudi#r | Materiale per il mont. Sottofondo caldai | Montagemateriaal Ketelsokkel -27kW | Material de montaje Base de la caldera |
| 11 | O-ring 6x2 ISO 3601 FKM (3pc) | Joint torique 6x2 ISO 3601 FKM (3x) | O-ring 6x2 ISO 3601 FKM (3x) | O-Ring 6x2 ISO 3601 FKM voor (3x) | Anillo tórico 6x2 ISO 3601 FKM (3x) |
| 12 | Gas sensor D29/d6 60mm | Sonde de temperature de fumee 60mm | Sonda gas combusti D29/d6 60 lung. | Rookgasvoeler voor D29/d6 60mm | Sonda de gases para GB125 D29/d6 60mm |
| 13 | Holding plate exhaust sensor | Plaque de jonction | Lamierino | Houderplaat | Placa de unión |
| 14 | Exhaust pipe DN80 | Tuyau d'évacuation gaz DN80 | Condotto fumi DN80 | Rookgasafvoerbuis DN80 | Tubo salida de gases DN80 |
| 15 | lips seal d80 PerOxyd (5x) | Joint a levre DN80 peroxyde (5x) | Guarniz. ad anello spigolo tenutaDN80 5x | Lippenafdichting DN80 PerOxid (5x) | Junta DN80 PerOxyd (5x) |
| 16 | Clamp D85 (1x) packed | Support D85 (1x) | Fascetta D85 (1x) | Klembeugel D85 (1x) | Abrazadera D85 (1x) |
| 17 | Boiler connection | Raccordement chaudi#re | Attacco caldaia | Ketelaansluiting | Conexión de caldera |
| 18 | Clip wire hose clip 50-57mm | Double collier de serrage de fil 50-57mm | Morsetto doppio filo 50-57mm | Dubbele kabelklem 50-57mm | Abrazadera de alambre doble 50-57mm |
| 19 | Hose DN52 L800mm | Tuyau DN52 L800mm | Tubo flessibile DN52 L800mm | Flexibele slang DN52 L800 G135 | manguera DN52 L800mm |
| 20 | Venturi standpipes DN52 | Venturi Buse DN52 | Venturi Manicotto DN52 | Venturibevestiging voor G(B)135 | Venturi Tubo de empalme DN52 |
| 21 | Sensor boiler G1/4 75 D=11 | Sonde chaud g1/4 75mm d=11mm | Sonda caldaia G1/4 75 lun. D=11mm | Ketelvoeler G1/4 75mm D=1 | Sensor caldera G1/4 75mm D=11 |
| 22 | Sample point cap | Capot de protection | Calotta | Beschermkap | Capuchón protector |
| 23 | Plug | Bouchon | Tappo | Stop | Tapon |
| 2 | Element of construction | Groupe de construction | Gruppo di costruzione | Montagegroep | Grupo de construcción |
| 1 | Burner door assy (cast iron) | Porte de br#leur | Porta del bruciatore | Branderdeur | Puerta del quemador |
| 2 | Thermal insulation Burner door V2 | Isolation Porte de br#leur V2 | Isolamento Porta del bruciatore V2 | Isolatie brander deur V2 | Aislamiento Puerta del quemador V2 |
| 3 | Thermal insulation Burner door | Isolation Porte de br#leur | Isolamento Porta del bruciatore | Isolatie brander deur | Aislamiento Puerta del quemador |
| 4 | Rope seal 18x1408 GP | Cordon d'étanchéité 18x1408 ,GP | Cordone ermetizzante 18x1408 ,GP | Afdichtingkoord 18x1408 ,GP | Cordón junta 18x1408 ,GP |
| 5 | Viewing hole lock V3 compl. | Viseur flam v3 | Chiusura spioncino V3 compl. | Kijkdeksel V3 | Mirilla completa V3 |
| 6 | Measuring nozz M6 SW10 V2 | Injecteur de mesure de press. M6 SW10 V2 | Ugello misura della pressione M6 SW10 V2 | Drukmeetnippel M6 | Toma presiones M6 SW10 V2 |

| Übersetzungsliste List of translations | | Liste des traductions Traduzione delle descrizioni | | Vertalinglijst Lista de traducciones | |
|---|--|---|--|---|--|
| Pos | Description | Denomination | Descrizione | Benaming | Descripción |
| 7 | Glass pane 30x30x3,3mm repl pack | Verre tempax 30x30x3,3mm v2 | Lastra di vetro 30x30x3,3mm | Glasvenster 30x30x3,3mm | Mirilla 30x30x3,3mm |
| 8 | Installation material burner door | Matériel de montage Porte de br#leur | Materiale per il montaggio Porta del bru | Montagemateriaal branderdeur | Material de montaje Puerta del quemador |
| 9 | Gasket 30x30x3mm | Joint 30x30x3 (G315) | Guarnizione 30x30x3 | Pakking 30x30x3 | Junta 30x30x3 |
| 10 | Support service position | Support service position | Supporto servizio posizione | Steun | Soporte Servicio posición |
| 11 | Mounting plate oil hose | Plaque de jonction Flexible fioul | Lamierino Tubo gasolio | Vangschaal Oliebuis | Placa de unión Tubo flexible de aceite |
| 12 | Installation material oil burner BE | Matériel de montage Br#leur fioul BE | Materiale per il montaggio Bruciatore a | Montagemateriaal brander BE | Material de montaje quemador de gasóleo |
| 3 | Element of construction | Groupe de construction | Gruppo di costruzione | Montagegroep | Grupo de construccion |
| 1 | Cover boiler TG13/TS10 | Couvercle avant Corps de chauffe TG13 | Parete anteriore Corpo caldaia TG13/TS10 | Voorwand ketelblok TG13/TS10 | Pared delantero cuerpo de caldera TG13 |
| 2 | Badge "Junkers | Plaque signalétique | Targhetta caldaia | Toestelplaat | Placa del aparato |
| 3 | SIDE PANEL LEFT | Paroi latérale gauche | Pannello laterale sinistra | Zijpaneel links | Parte lateral izquierda |
| 4 | Hood design | Capot Design | Coperchio design | Design Afdekkap | Carcasa design |
| 5 | Hood 590 x 558 | Capot 590 x 558 | Coperchio 590 x 558 | Afdekkap 590 x 558 | Carcasa 590 x 558 |
| 6 | Cross beam top | Traverse supérieur | Traversa | Vangschaal | Mástil de refuerzo |
| 7 | Covering sheet Hood | Tôle de protection Capot | Lamierina di protezione Coperchio | Afdekplaat | Chapa de recubrimiento capota |
| 8 | Rear panel | Dosseret | Parete posteriore | Achterwand | Pared trasera |
| 9 | Side panel right | Paroi latérale droite | Pannello laterale destra | Zijpaneel rechts | Parte lateral derecha |
| 10 | SIDE WALL BASE FRAME | Paroi latérale bas | Parete laterale sotto | Zijwand Onder | Pared lateral debajo |
| 11 | Cover base frame | Couvercle avant bas | Parete anteriore sotto | Voorwand Onder | Pared delantero debajo |
| 12 | SIDE WALL BASE FRAME | Paroi latérale bas | Parete laterale sotto | Zijwand Onder | Pared lateral debajo |
| 13 | INSTALLATION MATERIAL CASING | Matériel de montage Carénage | Materiale per il montaggio Rivestimento | Montagemateriaal bekleding | Material de montaje revestimiento |
| 14 | Foot M10x51 (4x) | Pieds réglables M10x51 (4x) | Piedini regolabili M10x51 (4x) | Voetjes Boiler HP-270-1 | Patas regulables M10x51 (4x) |
| | Boiler base frame 110mm 19/27 | Socle de la chaudi#re 110mm 19/27 | Sottofondo caldaia 110mm 19/27 | Ketelonderbouw 110mm 19/27 | Base de la caldera 110mm 19/27 |
| | Boiler base frame 300mm 19/27 | Socle de la chaudi#re 300mm 19/27 | Sottofondo caldaia 300mm 19/27 | Ketelonderbouw 300mm 19/27 | Base de la caldera 300mm 19/27 |
| | Accessory brush for STK 19-27 | Brosse de ramonage STK 19-27 | Spazzola per la pulizia STK 19-27 | Reinigingsborstel STK 19-27 | Cepillo de limpieza STK 19-27 |
| | Paint pen BBT-white VZF 37351 12ml | Crayon pour retouche vernis BBT- blanc | Pennarello a vernice per ritocchi bianco | Lakstift BBT- wit 12ml | Rotulador de laca BBT- blanc 12ml |
| | Paint spray can BBTwhite VZF 37351 400ml | Laque gaseuse VZF 37351 400ml blanc | Erogatore VZF 37351 400ml bianco | Doosje lak VZF 37351 400ml wit | Atomizador esmalteVZF 37351 400ml blanco |
| 4 | Element of construction | Groupe de construction | Gruppo di costruzione | Montagegroep | Grupo de construccion |
| 1 | Filter oil B20 TOC-DUO A | Filtre # fioul B20 TOC-DUO A | Filtro del gasolio B20 TOC-DUO A | Oliefilter B20 TOC-DUO A | Filtro de gasóleo B20 TOC-DUO A |
| 2 | Filter Paper 5-20 Mikro incl. Seal sp | Papier-filtre 5-20 Mikro avec joint | Carta da filtro 5-20 Mikro con sigillo | Filtreerpapier 5-20 Mikro met pakking | Cartucho filtrante 5-20 Mikro con junta |
| 3 | Bracket Oil Filter TOC-DUO V | Tôle de fixation Filtre # huile | Angolare di sostegno Filtro a olio | Steunhoek Olie Filter TOC-DUO V | Angulo soporte Filtro de aceite |
| 4 | Hose set cpl yellow | Jeu de tuyau jaune | Tubetto giallo | Slangenset geel | Conjunto de tubo flexible amarillo |
| 5 | Washer 13x18x1,5 (5x) | Joint 13x18x1,5 (5x) | Guarnizione 13x18x1,5 (5x) | Dichting 18 x 13 x 1,5 (5x) | Junta toma presiones mirilla 13x18x1,5 |

| Übersetzungsliste List of translations | | Liste des traductions Traduzione delle descrizioni | | Vertalinglijst Lista de traducciones | |
|---|--|---|--|---|--|
| Pos | Description | Denomination | Descrizione | Benaming | Descripción |
| 6 | Screw connection 3/8"x1/4" straight | RACCORD 3/8"x1/4",DROIT | Raccordo 3/8x1/4" | Nippel 3/8"x1/4" recht vr olieflexibel | Racor 3/8 x 1/4 |
| 7 | Shut-off valve G3/8" | Vanne d'arr#t G3/8" | Valvola di intercettazione G3/8" | Afsluitventiel G3/8" | Válvula de corte G3/8" |
| 8 | Screw KB50x35/20 (4Pc) | Vis KB50x35/20 (4x) | Vite KB50x35/20 (4x) | Schroef KB50x35/20 (4x) | Tornillo KB50x35/20 (4x) |
| 9 | Boiler fill & drain valve 1/2 L80 finpV2 | Robinet de remplissage 1/2" avec | Rubinetto di carico 1/2" a | Vulkraan 1/2" Verlenging L80 V2 | Grifo de llenado y de vaciado 1/2" |
| 10 | Siphon with float V2 | Siphon kpl V2 | Sifone con galleggiante V2 | Sifon met vlotter V2 | Sifón con flotador V2 |
| 11 | Tube set DN20 DN20 (3m) | Tuyau DN20 (3m) | Tube flessibile DN20 (3m) | Slang DN20 (3m) | Manguera DN20 (3m) |
| 19 | Pressure monitor min m adapter | Pressostat compl. Min | Pressostato | Drukschakelaar G(B)135 | Controlador de presión |
| 20 | Membrane safety valve MS 1/2, 3 bar | SOUPAPE DE SECURITE MS 1/2 3BAR | Valvola sicurezza MS 1/2", 3bar | Veiligheidsklep MS 1/2", 3bar | Válvula de seguridad MS 1/2", 3bar |
| 21 | Air_vent automatic purging system 3/8" | Pot de ventilateur 3/8" | Valvola di sfianto 3/8" | Ontluchtingsdeksel 3/8" | Separador de aire 3/8" |
| 22 | Pressure gauge G3/8" D50, axial 0 -4 bar | MANOMETRE G3/8" D50 0-4 BAR GB202 | Manometro G3/8" D50, axial 0-4bar | Manometer 3/8" D50, 0-4 bar voor G135 | Manómetro G3/8" D50, axial 0-4bar |
| 23 | Distribution safety equipment | Collecteur - groupe de sécurité | Distributore Gruppo sicurezza | Kortsluitleiding Zekerheidsgroep | Boquilla de purga grupo de seguridad |
| 24 | Flow pipe ht circ DN25 cpl. | Tube départ DN25 | Tube di mandata DN25 | Aanvoerleiding DN25 | Tube de impulsión DN25 |
| 25 | Corner distributor G1" cpl | Equerre Distributeur G1" | Angolo Distributore G1" | Hoeksteun Kortsluitleiding G1" | Ángulo Boquilla de purga G1" |
| 26 | Cover G1" packed | Capuchon G1" | Tappo G1" | Kapje G1" | Tapa G1" |
| 27 | Pipe-Clips , 1 fold 28 mm M6 (2x) | Tube-Clips 28 mm M6 (2x) | Tube-Clips 28 mm M6 (2x) | Pijp-Clips 28 mm M6 (2x) | Tube-Clips 28 mm M6 (2x) |
| 28 | Gasket D21X30X3, DVGW-ZUGEL (5x) everp | Joint D21x30x3 (5x) | Guarnizione (5x) | Pakking (5x) | Junta D21x30x3 (5x) |
| 29 | Gasket D17x24x2 AFM34 (x10) | Joint D17x24x2 AFM34 (10x) | Guarnizione D17x24x2 AFM34 (10x) | Afdichting D17x24x2 AFM34 | Junta D17x24x2 AFM34 (10x) |
| 30 | Return pipe ht c DN25 kpl | Tube retour HK DN25 kpl V2 | Tube di ritorno HK DN25 kpl V2 | Retourleiding HK DN25 kpl V2 | Tube de retorno HK DN25 kpl V2 |
| 31 | Conn union 2/3 R3/4" everp | Raccord sonde sanitaire 2/3 R3/4" | Raccordo 2/3 R3/4" | Schroefkoppeling 2/3 R3/4" v.sifon SB105 | Conexión 2/3 R3/4" |
| 32 | Accessory pipe elbow 3/8" IG x 1/2" AG | Coude 3/8" IG x 1/2" AG | Curva 3/8" IG x 1/2" AG | Bocht 3/8" IG x 1/2" AG | Arco 3/8" IG x 1/2" AG |
| 33 | O-Ring for Oilfilter packed | Joint torique pour filtre huile | O-ring per filtro olio | O-ring voor oliefilter | Junta tórica para el filtro |
| | Sealing-Set Siphon | Kit de joints pour siphon | Set guarnizioni sifone | Afdichtingsset sifon | Juego de juntas sifón |
| 8A | Element of construction | Groupe de construction | Gruppo di costruzione | Montagegroep | Grupo de construccion |
| 1 | Oil burner BZ 1.0-19 KUB 19-3 | Br#leur fioul BZ 1.0-19 KUB 19-3 | Bruciatore a gasolio BZ 1.0-19 KUB 19-3 | Stookoliebrander BZ 1.0-19 KUB 19-3 | quemador de gasóleo BZ 1.0-19 KUB 19-3 |
| 1 | Oil burner BZ 1.0-27 KUB 27-3 | Br#leur fioul BZ 1.0-27 KUB 27-3 | Bruciatore a gasolio BZ 1.0-27 KUB 27-3 | Stookoliebrander BZ 1.0-27 KUB 27-3 | quemador de gasóleo BZ 1.0-27 KUB 27-3 |
| 5 | Service-Set BZ1.0-19 everp | Set de service BZ1.0-19 | Imballato BZ1.0-19 | Service set BZ1.0-19 | Conjunto de servicio BZ1.0-19 |
| 5 | Service-Set BZ1.0-27 everp | Set de service BZ1.0-27 | Imballato BZ1.0-27 | Service set BZ1.0-27 | Conjunto de servicio BZ1.0-27 |
| 8B | Element of construction | Groupe de construction | Gruppo di costruzione | Montagegroep | Grupo de construccion |
| 1 | Pump oil Suntec ATE2V55D | Pompe # fioul Suntec ATE2V55D | Pompa gasolio Suntec ATE2V55D | Oliepomp Suntec ATE2V55D | Bomba de gasóleo Suntec ATE2V55D |
| 2 | solenoid coil Suntec 220-240V/50-60Hz | Bobine electrovanne pompe suntec | Bobina magnetica Suntec 220-240V/50-60Hz | magneetspoel Suntec 220-240V/50-60Hz | Bobina magnética Suntec |
| 3 | filter oil pump A70 Rev.3 AS 47 (2x) | Filtre Pompe # fioul A70 Rev.3 AS47 (2x) | Filtro Pompa gasolio A70 Rev.3 AS47 (2x) | Filter Oliepomp A70 Rev.3 AS 47 (2x) | Filtro bomba gasóleo A70 Rev.3 AS47 (2x) |
| 4 | gasket oil pump ALE 35/55 (2x) | JOINT COUVERCLE POMPE SUNTEC AS 47 (2x) | Guarnizione Pompa gasolio ALE 35/55 (2x) | Pakking Oliepomp ALE 35/55 (2x) | Junta bomba de gasóleo ALE 35/55 (2x) |

| Übersetzungsliste List of translations | | Liste des traductions Traduzione delle descrizioni | | Vertalinglijst Lista de traducciones | |
|---|--|---|--|--|--|
| Pos | Description | Denomination | Descrizione | Benaming | Descripción |
| 5 | Hose set cpl yellow | Jeu de tuyau jaune | Tubetto giallo | Slangenset geel | Conjunto de tubo flexible amarillo |
| 6 | Washer 13x18x1,5 (5x) | Joint 13x18x1,5 (5x) | Guarnizione 13x18x1,5 (5x) | Dichting 18 x 13 x 1,5 (5x) | Junta toma presiones mirilla 13x18x1,5 |
| 7 | Screw connection 3/8x1/4" straight | RACCORD 3/8"X1/4",DROIT | Raccordo 3/8x1/4" | Nippel 3/8"x1/4" recht vr olieflexibel | Racor 3/8 x 1/4 |
| 8 | Motor 50W 230V 50Hz SP | Moteur 50W 230V 50Hz | Motore 50W 230V 50Hz | Motor 50W 230V 50Hz | Motor 50W 230V 50Hz |
| 9 | Clutch white (2x) | Accoupl mot.- pompe fioul 2 meplats(2x) | Accoppiamento bianco (2x) | Koppeling wit (2x) | Acoplamiento blanco (2x) |
| 10 | Capacitor 3µF | Condensateur 3âf moteur hg 90w | Condensatore 3MF | Condensator 3MF | Condensador 3MF 400V Mot AEG |
| 11 | Ignition Danfoss EBI V4 spare part | Transformateur allumage ebi danfoss v4 | Dispositivo di accensione Danfoss EBI V4 | Ontstekingsunit Danfoss EBI V4 | Transformador de encendido EBI V4 |
| 12 | Distribution cylinder BZ | Cylindre de distribution BZ | Cilindro di distribuzione BZ | Verdeelcilinder BZ | Cilindro de distribución BZ |
| 8C | Element of construction | Groupe de construction | Gruppo di costruzione | Montagegroep | Grupo de construccion |
| 1 | Screw connection XGE 4LLR 1/8" cyl. | RACC DROIT VIS XGE 4 LLR 1/8" | Raccordo XGE 4LLR 1/8" | Nippel XGE4LLR 1/8" voor oliepompe | Unión roscada XGE 4LLR 1/8 |
| 2 | Oil pipe BZ | Conduite fioul BZ | Tubazione del gasolio BZ | Olieleiding BZ | Tubería de gasóleo BZ |
| 3 | Preheater oil FPHB5-LE PTC70 B10 BZ | Réchauffeur de fioul FPHB5-LE PTC70 B10 | Preriscaldatore del gasolio FPHB5-LE PTC | Olievoorverwarmer FPHB5-LE PTC70 B10 BZ | Pre calentador de gasóleo FPHB5-LE PTC70 |
| 4 | Cut-off valve LE6 sp | Clapet retenu le6 | Valvola a membrana LE6 | Membraanventiel LE6 voor Unit BE | Válvula antigoteo LE6 |
| 5 | UV-flaming sensor QRC SAFE BZ/BE_3 | Detect flam qrc safe BZ/BE | UV-flaming sensor QRC SAFE BZ/BE_3 | Fotocel QRC SAFE voor brander BE_3/BZ | Fotocélula QRC SAFE BE_3 |
| 6 | Pressure test nozzle R 1/8" MS | BUSE MESURE R 1/8 | Nipplo di prova pressione R1/8" Ms | Meetnippel gasstraat R 1/8 | Toma presiones R 1/8" MS |
| 7 | Mounting holder QRC HT | Support QRC HT | Supporto QRC HT | Haakse fotocelhouder QRC HT | Soporte QRC HT |
| 8 | Ignition strand + BZ 1.0 2pc | Faisceau d'électrodes (2x) | Cavetto accensione (2x) | Ontstekingsleiding + kabel BZ1.0 (2x) | Conductor de alta tensión (2x) |
| 9 | Grommet BZ 1.0 | Passe fill BZ 1.0 | Passacavo BZ 1.0 | Doorvoertule BZ 1.0 | Prensa cable BZ 1.0 |
| 10 | Seal D28x22x3 | Joint D28x22x3 | Guarnizione D28x22x3 | Afdichting D28x22x3 | Junta D28x22x3 |
| 12 | Nozzle oil 0.45gph 60gr HR Danfoss everp | gicleur fioul 0.45gph 60gr HR Danfoss | ugello per gasolio 0.45gph 60gr HR Danfo | olie-inspuitter 0.45gph 60gr HR Danfoss | tobera de gasóleo 0.45gph 60gr HR Danfos |
| 12 | Oil nozzle 0,35gph 80Gr HR | Gicleur 0,35/80° hr | Ugello per gasolio 0,35gph 80Gr HR | Olie-inspuitter 0,35gph 80Gr HR | Tobera de gasóleo 0,35gph 80Gr HR |
| 13 | Mixer system BZ 12,0/25,0/5,0/25 VA | Chambre de melange BZ 12,0/25,0/5,0/25VA | Modulo di miscelazioneBZ12,0/25,0/5,0/25 | Menginrichting BZ 12,0/25,0/5,0/25 VA | Máquina de mezcla BZ 12,0/25,0/5,0/25 VA |
| 13 | Mixer systemBZ 12,1/27,5/5,8/25 VA | Chambre de melange BZ12,1/27,5/5,8/25 VA | Modulo di miscelazioneBZ12,1/27,5/5,8/25 | Menginrichting BZ 12,1/27,5/5,8/25 VA | Máquina de mezcla BZ 12,1/27,5/5,8/25 VA |
| 14 | Ignition electrode BZ Typ4 L25 | ELECTRODE ALLUM BZ L25 | Elettrodo accensione BZ Typ4 L25 | Ontstekingselektrode type 4 L25 voor BZ | Electrodo de ignición BZ Typ4 L25 |
| 14 | Ignition electrode BE Type 4 L50 V2 | Électrode d'allumage BE Typ4 L50 V2 | Elettrodo di accensione BE Typ4 L50 V2 | Ontstekingselektrode BE Typ4 L50 V2 | Electrodo de encendido BE Tipo 4 L=50 |
| 15 | Seal D81 V2 everp | JOINT DE TUYERE D81 V2 | Dichtung D81 V2 | Dichtung D81 V2 | Junta D81mm para quemador sist.mezcla V2 |
| 16 | Blast tube D69/L214 18kW | Tuyere 69/I214 sic 18kw | Raccordo bruciatore D69/L214 SiC 18kW | Branderbuis D69/L214 voor BZ 18kW | Tubo mezclador D69/L214 SiC 18kW |
| 16 | Blast tube D83/L214 25kW | Tuyere GB125BE 25kw | Raccordo bruciatore D83/L214 25kW | Branderbuis D83/L214 voor BZ 25kW | Tubo mezclador D83/L214 25kW |
| 17 | Support tube L50 | TUBE DE SUPPORT L50 | Support tube L50 | Support tube L50 | Tubo Supletorio Ca#ón Cerámico |
| 18 | O-ring 92x3 | Joint etancheite d 93x3 mm4 | O-Ring 92x3 Viton everp | O-Ring 92x3 voor branderbuis Unit BE | Anillo tórico 92x3 Viton |
| 19 | Cylinder-head screw DIN7984 M8x25 8.8 A3 | VIS A TETE CYLINDRIQUE DIN7984 M8X25 8.8 | Cylinder-head screw DIN7984 M8x25 8.8 A3 | Cylinder-head screw DIN7984 M8x25 8.8 A3 | Tornillo DIN7984 M8x25 8.8 A3K |
| 20 | Gasket D130xD106x2 V2 | Joint D130x106x2 V2 | Guarnizione D130x106x2 V2 | Afdichting D130x106x2 V2 | Junta D130x106x2 V2 |

| Übersetzungsliste List of translations | | Liste des traductions Traduzione delle descrizioni | | Vertalinglijst Lista de traducciones | |
|---|--|---|--|--|--|
| Pos | Description | Denomination | Descrizione | Benaming | Descripción |
| 21 | Pan-head screw DIN7985 M5x10 (5x) | Vis # t#te bombée DIN7985 M5x10 (5x) | Vite a testa bombata DIN7985 M5x10 (5x) | Lenskopschroef DIN7985 M5x10 (5x) | Tornillo DIN7985 M5x10 (5x) |
| 22 | Burner flange BZ | Br#leur Trappe de visite BZ | Bruciator Flangia BZ | Brander Aansluitflens BZ | Quemador Brida de conexión BZ |
| 23 | Mounting plate oil hose | Plaque de jonction Flexible fioul | Lamierino Tubo gasolio | Vangschaal Oliebuis | Placa de unión Tubo flexible de aceite |
| 24 | Gasket D185xD160x3 | Joint D185x160x3 | Guarnizione D185x160x3 | Dichting D185xD160X3 Mengsys. BZ | Junta D185x160x3 |
| 8D | Element of construction | Groupe de construction | Gruppo di costruzione | Montagegroep | Grupo de construccion |
| 2 | Housing Terminal cover SAFe | Couvercle safe GB402 | Coperchio SAFe | Behuizing klemmenstrook SAFe | Carcasa cubre conexiones SAFE |
| 3 | Control_box SAFe30 V7 DNA SP | SAFe30 V7 DNA | SAFe30 V7 DNA | SAFe30 V7 DNA | SAFe30 V7 DNA SP |
| 4 | Housing lower section SAFe | BOITIER ARRIERE SAFE | Involucro Parte inferiore SAFe | Behuizing achterwand SAFe | Carcasa posterior SAFe |
| 5 | Connection line 230 V AC Fan | Conduite de raccordement 230V AC Ventil. | Cablaggio di collegamento 230V AC Ventil | Verbindingsleiding 230V AC Ventilator | Tubo de conexión 230V AC Ventilador |
| 6 | Connecting pipe air | Conduite de raccordement | Tubazione di collegamento | Verbindingsleiding | Tubo de conexión |
| 7 | Ignition cable SAFe 230 V | Cable allumage - safe | Cavetto accensione SAFe 230V | Ontstekingskabel SAFe 230V everp | Cable de encendido RE/DE/SE |
| 8 | Connection line fuel 1 SAFe | Cable Electrovanne 1 - SAFe | Tubazione di collegamento 1 SAFe | Verbindingsleiding brandstof 1 SAFE | Cable de conexión electroválvula |
| 9 | Connection line fuel 2 SAFe | Conduite de raccordement 2 SAFe | Tubazione di collegamento 2 SAFe | Verbindingsleiding brandstof 2 SAFE | Tubo de conexión 2 SAFe |
| 10 | Data cable SAFe | Ligne de transmission des données SAFe | Tubazione di collegamento SAFe | Verbindingsleiding Safe MC10 G135 | Cable de datos SAFe |
| 11 | Con cable sensor SAFe socket | Conduite de raccordement SAFe | Tubazione di collegamento SAFe | Verbindingsleiding SAFe | Tubo de conexión SAFe |
| 12 | Gas sensor D29/d6 60mm | Sonde de temperature de fumee 60mm | Sonda gas combusti D29/d6 60 lung. | Rookgasvoeler voor D29/d6 60mm | Sonda de gases para GB125 D29/d6 60mm |
| 13 | Sensor Air temperature | Sonde de température | Sensore sicurezza di temperatura | Luchttemperatuurvoeler voor G135 | Sensor de temperatura |
| 14 | Connection line Fan SAFe | Conduite de raccordement VentilateurSAFe | Cablaggio di collegamentoVentilatoreSAFe | Verbindingsleiding Ventilator Safe | Tubo de conexión Ventilador SAFe |
| 15 | UV-flaming sensor QRC SAFe BZ/BE_3 | Detect flam qrc safe BZ/BE | UV-flaming sensor QRC SAFe BZ/BE_3 | Fotocel QRC SAFe voor brander BE_3/BZ | Fotocélula QRC SAFe BE_ 3 |
| 16 | Mains supply cable inlet connector for | Cordon branchement reseau | Cavo di rete | Netaansluitleiding koudetest G135 | Cable conexión red SAFe |
| 17 | Modul BIM30*-Lol/01 V21-19-JKS sp | module BIM30*-Lol/01 V21-19-JKS | Modulo BIM30*-Lol/01 V21-19-JKS | module BIM30*-Lol/01 V21-19-JKS | módulo BIM30*-Lol/01 V21-19-JKS |
| 17 | Modul BIM30*-Lol/01 V21-27-JKS sp | module BIM30*-Lol/01 V21-27-JKS | Modulo BIM30*-Lol/01 V21-27-JKS | module BIM30*-Lol/01 V21-27-JKS | módulo BIM30*-Lol/01 V21-27-JKS |
| | Adapter H05V-K 0,75 0,8/2,0 | Raccord H05V-K 0,75 0,8/2,0 | Adattore H05V-K 0,75 0,8/2,0 | Adapter H05V-K 0,75 0,8/2,0 | Adaptador H05V-K 0,75 0,8/2,0 |
| 8E | Element of construction | Groupe de construction | Gruppo di costruzione | Montagegroep | Grupo de construccion |
| 1 | Combustion air fan RG130 V4 | Ventilateur RG130 V4 | Ventilatore RG130 V4 | Ventilator RG130 V4 | Ventilador RG130 V4 |
| 1 | Combustion air fan RG 148 V4 | Ventilateur RG148 V4 | Ventilatore RG148 V4 | Ventilator RG148 V4 | Ventilador RG148 V4 |
| 2 | Gasket D133xd91x2 | Joint D133x91x2 | Guarnizione D133x91x2 | Afdichting D133x91x2 | Junta D133x91x2 |
| 3 | Mounting plate air header | Plaque de jonction | Lamierino | Houderplaat | Placa de unión |
| 3 | Mounting plate air header RG148 | Plaque de jonction | Lamierino | houderplaat | placa de uni###n |
| 4 | Cylinder-head screw DIN7984 M8x25 8.8 A3 | VIS A TETE CYLINDRIQUE DIN7984 M8X25 8.8 | Cylinder-head screw DIN7984 M8x25 8.8 A3 | Cylinder-head screw DIN7984 M8x25 8.8 A3 | Tornillo DIN7984 M8x25 8.8 A3K |
| 5 | Gasket D83/63x36 | Joint D83/63x36 | Guarnizione D83/63x36 | Afdichting D83/63x36 | Junta D83/63x36 |
| 6 | Air collector SB105 | Collecteur d'air SB105 | Collettore d'aria SB105 | Luchtaanzuigbuis SB105 | Colector de aire SB105 |

| Übersetzungsliste List of translations | | Liste des traductions Traduzione delle descrizioni | | Vertalinglijst Lista de traducciones | |
|---|---|---|---|--|---|
| Pos | Description | Denomination | Descrizione | Benaming | Descripción |
| | Case RG130 pac | Capuchon RG130 | Tappo RG130 | Kapje RG130 | Tapa RG130 |
| | Installation material oil burner BE | Matériel de montage Br#leur fioul BE | Materiale per il montaggio Bruciatore a | Montagemateriaal brander BE | Material de montaje quemador de gasóleo |
| 9 | Element of construction | Groupe de construction | Gruppo di costruzione | Montagegroep | Grupo de construccion |
| 1 | Control_unit MX25 | Appareil de régulation MX25 | Regolatore MX25 | Regeltoestel MX25 S14 | Regulador MX25 S14 |
| 3 | Housing hood white | Carter capot blanc | Copertura involucro bianca | Huis kap wit | Cubierta superior blanca |
| 4 | Housing module carrier white | Module plaque de jonction blanc | Modulo Supporto bianco | Module drager wit | Módulo soporte blanco |
| 5 | Fuse application 5x20 6,3AT 230V (10x) | Fusible arri#re 5x20 6,3AT 230V (10x) | Fusibile posteriore 5x20 6,3AT 230V(10x) | Buissmeltveiligh. Achter 5x20 6,3AT 230V | Seguridad detrás 5x20 6,3AT 230V (10x) |
| 6 | Fuseholder cap | Support de fusible | Porta fusibile | Zekeringhouder | Soporte fusible |
| 7 | Connector 3-pole white | Borne de connexion 3- pôles blanc | Morsetto di collegamento 3-bipol. bianco | Aansluitklem 3-polig wit | Connector 3-pole white |
| 8 | Connector 3-pol. SF50 pink | Borne de raccordement 3-poles SF50 rose | Morsetto di collegamento 3-pol.SF50 rosa | Aansluitklem 3-polig SF50 roze | Borne de conexión 3-polos SF50 rosa |
| 9 | Wire Power HV 1270 Ferrit everp | faisceau de câbles Power HV 1270 Ferrit | Cablaggio Power HV 1270 Ferrit | kabelboom Power HV 1270 Ferrit | mazo de cables Power HV 1270 Ferrit |
| 11 | Connector 4-pol 17B18 orange | Borne de raccordeme 4 poles 17B18 orange | Morsetto di collegamento 4-pol. 17B18 | Aansluitklem 4-pol. 17B18 oranje | Borne de conexión 4- polos anaranjado |
| 12 | Connecting terminal pluggable 3-pol | Borne de connexion 3- pôles jaune | Morsetto di collegamento 3-bipol. giallo | Afsluitklem 3- polig geel | Borne de conexión 3- polos amarillo |
| 13 | Connector 4-pole SH I violet | Borne de connexion 4- pôles SH I violet | Morsetto di collegame.4-bipol.SH I viol. | Aansluitklem 4-pol SH I violet | Borne de conexión 4- polos SH I violeta |
| 14 | Connector 3-pole PS grey | Borne de connexion 3- pôles ps gris | Morsetto di collegamento 3-pol.PS grigio | Aansluitklem 3-polig PS grijs | Connector 3-pole PS grey |
| 15 | Connector 3-pole PZ violett | Connecteur 3 poles violet | Morsetto di collegamento - pol.PZ violett | Aansluitklem 3-polig PZ violet | Connector 3-pole PZ violett |
| 16 | Connector 3-pole PH green | Borne de connexion 3- pôles PH vert | Morsetto di collegamento 3-pol. PH verde | Afsluitklem 3-polig PH groen | Connector 3-pole PH green |
| 17 | Wire SAFe - RMx 990mm | CABLES DONNEES SAFe RMx 990mm | Cavo dati SAFe RMx 990mm | Datakabel SAFe RMx 990mm | Cable de datos SAFe RMx 990mm |
| 18 | Connector 3-pol. AS red sparepart | Borne de raccordement 3-poles AS rouge | Morsetto di collegamento3-bipol.AS rosso | Aansluitklem 3-polig AS rood | Borne de conexión 3-polos AS rojo |
| 19 | Connecting terminal 2-polig WA maygreen | Fiche verte 2 poles wa | Morsetto di collegamento2-bipol WA verde | Afsluitklem 2-polig WA groen | Borne de conexión 2-polos WA verde |
| 20 | Connector 2- pin blue | Borne de connexion 2- pol r5 bl everp | Morsetto di collegamento 2-bipolare blu | Aansluitconnector 2-polig blauw | Borne de conexión 2-polos azul |
| 21 | Connector 2-pole grey FW | Borne de connexion 2- pôles gris FW | Morsetto di collegame.2-bipol. grigio FW | Afsluitklem 2- polig grijs FW | Borne de conexión 2-polos grey FW |
| 22 | Connect. term. 2-polig red | Fiche rouge 2 poles | Morsetto di collegamento2-bipolare rosso | Afsluitklem 2-polig rood | Borne de conexión 2-polos rojo |
| 23 | Connector 2- pin orange RC | Borne de connexion 2- pôles orange RC | Morsetto di collegamento2-bip. arancione | Aansluitconnector 2- polig oranje RC | Borne de conexión 2-polos anaranjado RC |
| 24 | Connector 2-pole white | Borne de connexion 2-poles blanc | Morsetto di collegamento2-pol bianco | Aansluitklem 2-polig wit | Connector 2-pole white |
| 30 | Housing strain relief control (10x) | Décharge de traction (10x) | Fermo antitrazione (10x) | Trekontlasting (10x) | Retenedor de cable (10x) |
| 31 | PCB MX25 S13 | Circuit imprimé MX25 S13 | Scheda elettronica MX25 S13 | Printplaat MX25 S13 | Placa electrónica MX25 S13 |
| 32 | PCB IP*1 S06 | circuit imprimé IP*1 S06 | circuito stampato IP*1 S06 | printplaat IP*1 S06 | placa electrónica IP*1 S06 |
| 33 | Cable harness MC100-IP*S01 | faisceau de câbles MC100-IP*1 S01 | Cablaggio MC100-IP*1 S01 | kabelboom MC100-IP*1 S01 | mazo de cables MC100-IP*1 S01 |
| 34 | Connecting cable 155mm | Câble 155mm | Cavo 155mm | Kabel 155mm | Cable de conexión 155mm |
| 35 | Control element BX25 S03 | Élément de commande BX25 S03 | Elemento di servizio BX25 S03 | Bedieningselement BX25 S03 | Elemento de manejo BX25 S03 |
| 36 | Housing blind cover BC white | Couvercle BC blanc | Copertura BC | Afdekking BC wit | Recubrimiento BC blanco |

Übersetzungsliste
List of translations

Liste des traductions
Traduzione delle descrizioni

Vertalinglijst
Lista de traducciones

| Pos | Description | Denomination | Descrizione | Benaming | Descripción |
|-----|--|--|--|--------------------------------|--|
| 37 | CW400 Bosch DE,AT,LU | CW400 Bosch DE,AT,LU | CW400 Bosch DE,AT,LU | CW400 Bosch DE,AT,LU | CW400 Bosch DE,AT,LU |
| 37 | CW400 Bosch CH,BE,IT | CW400 Bosch CH,BE,IT | CW400 Bosch CH,BE,IT | CW400 Bosch CH,BE,IT | CW400 Bosch CH,BE,IT |
| 38 | Casing flap MX25 | Boîtier couvercle MX25 | Involucro copertura di protezione MX25 | Behuizing afdekking MX25 | Carcasa couvercle MX25 |
| 40 | Outside temperature sensor | Sonde de température extérieure | Sonda esterna | Buitentemperatuurvoeler | Sensor de temperatura exterior |
| 41 | Temperature sensor NTC RD 6,0 12K 6000mm | Kit capteurs NTC RD 6,0 12K 6000 emballé | Sonda di temperatura NTC RD 6,0 12K 6000 | Temperature Sensor 6x40,6000mm | Sensor temperatura NTC RD 6,0 12K 6000mm |
| | LAN-Cable RJ45 Cat.5 2000 | LAN-câble 2000 | LAN-Cavo 2000 | LAN-kabel 2000 | LAN-cables 2000 |

| Gerätetypen Types of appliances | Types de chaudières Tipo apparecchi | Toesteltypes Tipos de aplicaciones | Bemerkungen Remarks Remarques Osservazioni Opmerkingen Observaciones |
|--|---|---|---|
| Gerät Appliance Chaudière Apparecchio Toestel Aparato | Bestell-Nr. Ordering no. Numéro de commande N° d'ordine Bestelnummer Número el ordenar | Land Country Pays Paese Land Paese | |
| KUB 19-4 | 7 736 600 773 | Belgien, Deutschland, Luxemburg, Schweiz, Ös | |
| KUB 27-4 | 7 736 600 774 | Belgien, Deutschland, Luxemburg, Schweiz, Ös | |



Bosch Thermotechnik GmbH
Junkersstr. 20-24
D-73249 Wernau / Germany